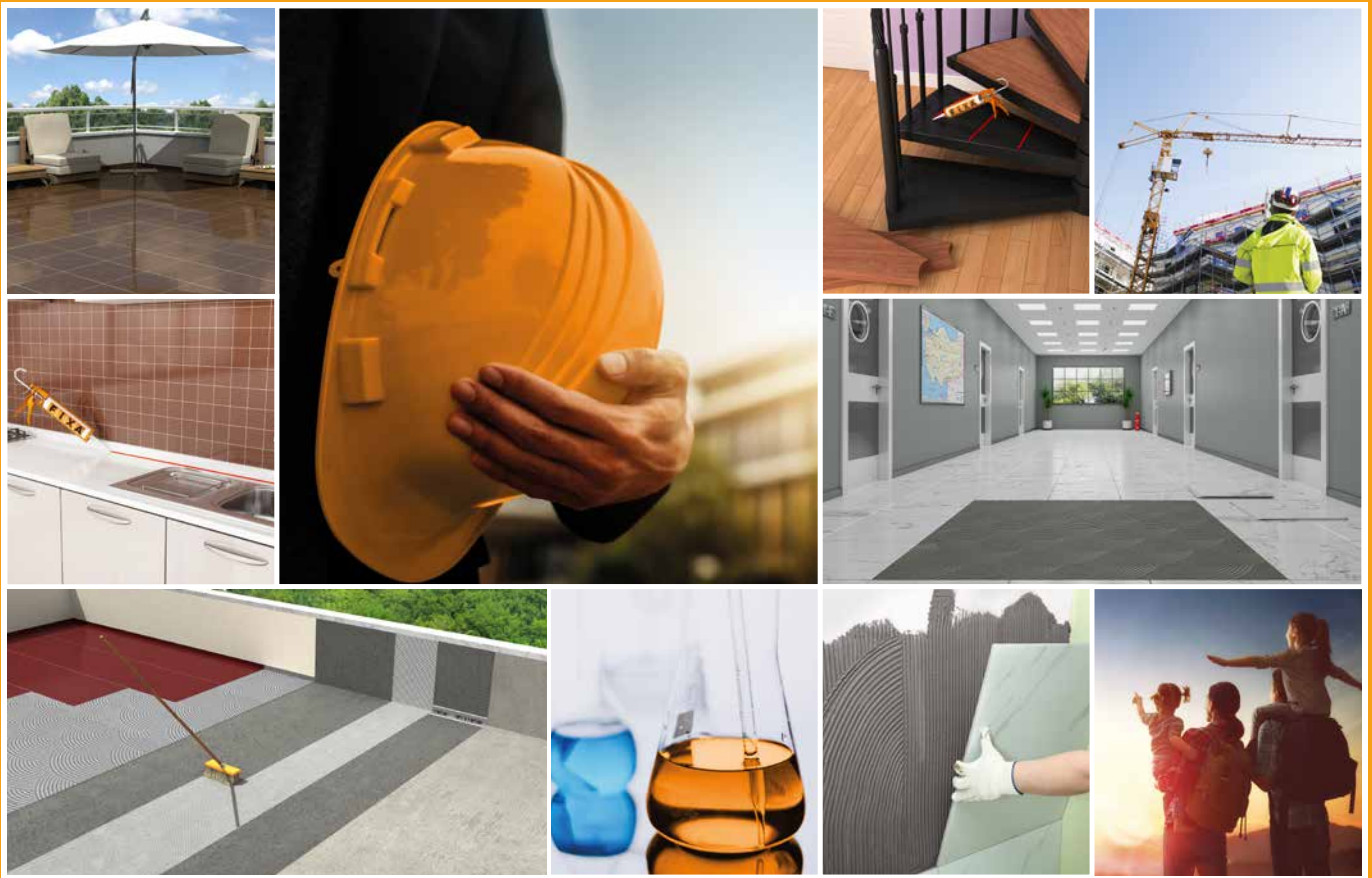


# PRODUCT BROCHURE 2022



**FIXA<sup>®</sup>**  
CONSTRUCTION CHEMICALS





In today's world, modern buildings are meeting not only the housing needs of people but also respond to their aesthetics, comfort and safety needs. Technologically advanced buildings raise the living standards of their residents and ensure that they live a happy life. Construction chemicals play a key role in this comfort.

FIXA CONSTRUCTION CHEMICALS was founded in 2001 in Istanbul with the belief that advanced technology buildings can only be constructed with high technology chemicals.

FIXA is one of the leading companies in its industry with its investment in research and development. Today, Fixa Construction Chemicals has an annual capacity of 350,000 tons of powdered and 5,000 tons of liquid chemical production in its 3 plants (Istanbul 2001, Adana 2009 and Ankara 2011). With its MS hybrid, polyurethane and silicone production facility completed in 2013, FIXA provides highest technology products to the Turkish construction industry.

IGLOO Heat Insulation Systems, a subsidiary of FIXA, was established in Istanbul in 2011 and with an annual production capacity of 350,000 m<sup>3</sup>, it produces high quality white and grey EPS for the heat insulation industry in Turkey.

FIXA respects Quality Control Systems as well as R&D and continuous training, to keep the highest standards in production and meet customer needs and expectations. All raw and semi-finished materials which affect the product quality and the finished products are object to required controls before shipment. In addition to TSE and CE, FIXA also has the ISO 9001:2015 Quality Management System Certificate for its products as well as other quality control certificates demanded in many markets.

FIXA also offers service to its customers with expert and professional sales and support teams to ensure the right product usage and application.

FIXA considers all its dealers as its business partners. In addition to its large dealer network throughout the country, FIXA continuously increases its exports with the distributorship network it has established in more than 30 countries in 4 continents.

Today FIXA offers high quality products for the construction industries both in Turkey and in the region, in 11 different groups: waterproofing systems, sealants, repair, reinforcement and restoration products, floor systems, thermal insulation systems, concrete and mortar admixtures, mold release agents and curing compounds, cement based plasters and bonding mortars, tile and ceramic adhesives, tile grouts and technical adhesives in its fully automated production facilities in Istanbul, Ankara and Adana.



**CONSTRUCTION CHEMICALS**
**Istanbul Plant**

Total Area	7,000 m <sup>2</sup>
Closed Area	4,200 m <sup>2</sup>
Production Capacity	150,000 ton/year (powder product) 5,000 ton/year (liquid product) 5,000 ton/year (MS-silicone sealant)


**Adana Plant**

Total Area	3,500 m <sup>2</sup>
Closed Area	2,500 m <sup>2</sup>
Production Capacity	80,000 ton/year (powder product)


**Ankara Plant**

Total Area	7,200 m <sup>2</sup>
Closed Area	4,800 m <sup>2</sup>
Production Capacity	120,000 ton/year (powder product)


**EPS**
**Istanbul Plant**

Total Area	4,500 m <sup>2</sup>
Closed Area	5,000 m <sup>2</sup>
Production Capacity	350,000 m <sup>3</sup> /year (EPS)







## POLYMERA® MS MS Polymer Based Liquid Membrane

Single component, semi-fluid, ready-to-use, solvent and isocyanate free, UV resistant, high technology coating and waterproofing material, produced with **MS Polymer** hybrid technology. **POLYMERA MS** is a medium viscosity product used in covering and repairing cracks up to 5 mm on horizontal and vertical surfaces.



## POLYMERA® MS FLUID MS Polymer Based Fluid Liquid Membrane

Single component, fluid, ready-to-use, solvent and isocyanate free, UV resistant, high technology coating and waterproofing material, produced with **MS Polymer** hybrid technology. **POLYMERA MS FLUID** can be used for waterproofing of horizontal and vertical large surfaces and for bridging capillary cracks up to 3 mm.



## AQUAMER® HB Hybrid Polymer Based Liquid Membrane and Coating

Single component, ready-to-use, solvent and isocyanate free, UV resistant, high technology coating and waterproofing fluid material, produced with **silane terminated hybrid polymer** technology. Suitable for light pedestrian traffic.



## AQUAMER® HB INVISIBLE Hybrid Polymer Based Transparent Coating and Liquid Membrane

Single component, ready-to-use, solvent and isocyanate free, UV resistant, high technology **transparent** coating and waterproofing fluid material produced with **silane terminated hybrid polymer** technology. Suitable for light pedestrian traffic.



## AQUAFIX® C Concentrated Crystallized Waterproofing Material

Cement-based, **concentrated crystallized** waterproofing material that can be applied in both **positive** and **negative** hydrostatic pressure directions and becomes reactive with water and moisture. It is the concentrated form of **AQUAFIX Crystallized Waterproofing Material**. It is applied alone or as the first coat before **AQUAFIX** to provide better penetration into the concrete.



## AQUAFIX® EXPAN High Strength Shrinkage Compensated Structural Waterproofing Repair Mortar

Cement-based, **crystallized** and **non-shrinking structural repair mortar** used for filling rod holes, chamfering and segregation repairs on concrete surfaces that gains high strength in a short time and provides water impermeability with the active chemicals it contains. It is resistant to both **positive** and **negative** hydrostatic water pressure. Thanks to its reactive feature, it provides waterproofing on the concrete surfaces on which it is applied throughout the service life of the structure.



## AQUAFIX® Crystallized Waterproofing Material

Cement-based, **crystallized** waterproofing material that can be applied in both **positive** and **negative** hydrostatic pressure directions and becomes reactive with water and moisture. It reacts with water, moisture and free lime in the concrete and penetrates deeply into the concrete thanks to its formula consisting of **cement, chemicals** and **specially selected fine aggregates**. It creates insoluble minerals in capillary spaces and pores.



## AQUAFIX® S Sulphate Resistant Crystallized Waterproofing Material

Cement based, **sulfate resistant, crystallized** mortar in powder form that can be applied in both **positive** and **negative** hydrostatic pressure directions and becomes reactive with water and moisture. Penetrates in depth into the concrete, in reaction with the water, moisture and free lime inside the concrete (old/new) with sulphate resistant cement, chemicals and specially selected fine aggregates in its formula, forms crystals that do not dissolve in capillary voids and pores. As it is resistant to sulphate and reactive, it protects the building against sulphate attacks, water and moisture throughout the life of the concrete and prevents the iron reinforcement from the corrosion.



## AQUAFIX® PRO Crystallized Waterproofing Material

Cement-based, **crystallized** waterproofing material **specifically developed for waterproofing of foundations** that can be applied in positive hydrostatic pressure directions and becomes reactive with water and moisture. It reacts with water, moisture and free lime in the concrete and penetrates deeply into the concrete thanks to its formula consisting of cement, chemicals and specially selected fine aggregates. It creates insoluble minerals in capillary spaces and pores.



## AQUAFIX® LIKIT C Concentrated Crystallized Capillary Waterproofing Additive for Concrete

**Concentrated, crystallized** waterproofing **liquid** additive with reactive properties which forms needle-tipped crystals in the pores and capillary voids in reaction with water, moisture and free lime after it is mixed into the concrete.



## AQUAFIX® LIKIT Crystallized Capillary Waterproofing Additive for Concrete

**Crystallized** waterproofing **liquid** additive with reactive properties which forms needle-tipped crystals in the pores and capillary voids in reaction with water, moisture and free lime after it is mixed into the concrete.



## AQUASTOP® Rapid Setting Powder Plugging Mortar

Polymer-reinforced powder waterproofing material with special type cement and chemical additives. It **hardens within 3 - 4 minutes** when it reacts with water and used in the isolation and repair of **active water leaks**. It provides high adherence.



## AQUACEMENT® 2K 251 Double Component Super Elastic Waterproofing Material

**Cement** and **acrylic based, super-elastic**, double component waterproofing material which can **bridge cracks**. Components must be mixed to provide waterproofing. Resistant to **positive** and **negative** water pressure.



## AQUACEMENT® 2K 250 Double Component Super Elastic Waterproofing Material

**Cement** and **acrylic based, super-elastic**, double component waterproofing material. Components must be mixed to provide waterproofing. Resistant to **positive** water pressure.



## AQUACEMENT® 2K 207 Double Component Super Elastic Waterproofing Material

**Cement** and **acrylic based, super-elastic**, double component waterproofing material. Components must be mixed to provide waterproofing. Resistant to **positive** water pressure.



## AQUACEMENT® 2K 205 Double Component Semi - Elastic Waterproofing Material

**Cement** and **acrylic based, semi-elastic**, double component waterproofing material. Components must be mixed to provide waterproofing. Resistant to **positive** water pressure.



### AQUACEMENT® UV500

Double Component Super Elastic Waterproofing Material - UV Resistant (White)

**White cement** and **acrylic** based, **super-elastic**, double component waterproofing material with **advanced UV resistance**. Components must be mixed to provide waterproofing. Resistant to **positive** water pressure.



### AQUACEMENT® 2K 207 Component B

Acrylic Based Admixture for Ceramic Adhesives and Waterproofing Materials

**Acrylic** based component B of **AQUACEMENT 2K 207 Double Component Super Elastic Waterproofing Material**. It is mixed into the waterproofing materials or ceramic adhesives to provide waterproofing, elasticity and high adherence.



### AKRILAN® 600

Acrylic Based UV Resistant Flexible Liquid Membrane

**Acrylic (elastomeric) resin** based, single component, **UV resistant**, flexible waterproofing material.



### AKRILAN® 600E

Acrylic Based Liquid Membrane

**Acrylic (elastomeric) resin** based, single component flexible waterproofing material.



### AQUALON®

Colorless Surface Protector and Water Repellent

**Silicone** based, solventborne **colorless surface protector** and **water repellent** which prevents rainwater to flow in, by penetrating underneath the surface.



### IZO-CERA®

Colorless Surface Protector and Water Repellent

**Silicone** based **colorless surface protector** and **water repellent** material which prevents water inflow by penetrating underneath the surface. Waterborne, does not contain solvent.



### BITUMFIX® WP BASIC

Bitumen Based Membrane Primer

Ready-to-use **primer** produced by mixing water and **bitumen** by special methods. It is used as a **primer** prior to the applications of any type of bitumen based products. After the evaporation of the water in its content, it forms a layer which increases adhesion.



### BITUMFIX® W

Bitumen Based Waterproofing Material - Waterborne

**Modified bitumen** and rubber based, single component, **waterborne** waterproofing material. It bonds on the surface strongly when it is set and generates a layer resistant to water and moisture.



### BITUMFIX® ELASTIK

Bitumen Based Elastic Waterproofing Material - Solventborne

**Modified bitumen** and **solvent** based, single component elastic waterproofing material. After the solvent in its content evaporates, it adheres strongly to the surface on which it is applied, forming an elastic and durable layer against water and humidity. Approximately **1000% elastic**.



### BITUMFIX® ELASTIK W

Bitumen Based Elastic Waterproofing Material - Waterborne

**Modified bitumen** based, single component, **waterborne**, elastic waterproofing material. Bonds strongly on the surface and forms a protective layer resistant to water and moisture.



### BITUMFIX® ELASTIK ANTIROOT

Bitumen Based Antirroot Elastic Waterproofing Material - Solventborne

**Modified bitumen** based, single component, solventborne, ready-to-use elastic waterproofing material which is specifically developed for waterproofing of foundations and constructions under ground. It is **resistant to plant roots**. Approximately **1000% elastic**.



### ALUFIX®

Aluminum Bitumen Based Reflective Paint

Solventborne, single component protective **bitumen** solution that contains **reflective aluminum**.



### BITUMFIX® BC 2K

Bitumen and Cement Based Double Component Waterproofing Material

**Cement** and **bitumen** emulsion based, double component, elastic and waterborne waterproofing material. BITUMFIX BC 2K is fiber supported, pasty, flexible when cured, has high adherence and long ageing time. It dries quickly, bonds strongly to the surface to generate a water insoluble, elastic layer that is resistant to water and moisture.



### BITUMFIX® ER 2K

Bitumen - Rubber and Cement Based Double Component Waterproofing Material

**Cement** and **elastomeric** resin supported, polymer added, **bitumen-rubber** emulsion based, double component, elastic and long lasting waterproofing material that is thixotropic, flexible when cured, has high adherence and long aging time. It dries quickly, bonds strongly to the surface to generate a water insoluble, elastic layer that is resistant to water and moisture.



### BITUMFIX® PU 1K

Bitumen and Polyurethane Based Single Component Waterproofing Material

**Bitumen - polyurethane** based, **single component**, protective waterproofing material. Thanks to the polyurethane in its content, it bonds strongly to the surface and generates a layer that is more resistant to water and moisture.



### BITUMFIX® PU 2K

Bitumen and Polyurethane Based Double Component Waterproofing Material

**Bitumen - polyurethane** based, **double component**, protective, super elastic waterproofing material. Thanks to the polyurethane in its content, it bonds strongly to the surface and generates a layer that is more resistant to water and moisture.



**POLAN® A**  
Polyurethane Floor Primer

**Polyurethane** based, single component, solventborne, transparent and ready to use **primer** which dries fast and is developed for rough and absorbent surfaces. It forms a middle layer to provide the coating adhere better.



**POLAN® 500**  
Polyurethane Coating and Waterproofing Material

**Polyurethane** based, single component, ready to use, **UV resistant**, walkable, solventborne liquid **coating** and **waterproofing** material.



**POLAN® 620**  
Polyurethane Based Double Component Waterproofing Material

**Polyurethane** based, double component, **solvent free** liquid waterproofing material.



**POLAN® 600 INVISIBLE**  
Polyurethane Transparent Coating and Waterproofing Material

**Transparent, UV resistant**, single component, **polyurethane** based, ready-to-use, elastic, walkable, solventborne, liquid top coat and waterproofing material.



**POLAN® 700**  
Pure Polyurea Coating and Waterproofing Material

**100% polyurea** based, double component, **flexible** spray coating and waterproofing material with high reactivity. **It can cover the cracks.**



**POLAN® 710**  
Hybrid Polyurea Coating and Waterproofing Material

**Hybrid polyurea** based, double component, **flexible** spray coating and waterproofing material with high reactivity. **It can cover the cracks.**



**POLAN® 750**  
Hybrid Polyurea Waterproofing Material

**Hybrid polyurea** based, double component, **flexible** spray coating and waterproofing material with high reactivity. **It can cover the cracks.**



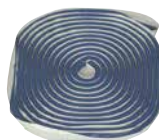
**IMPERMO® PVC**  
Waterproofing Tape

**Elastic, thermoplastic** elastomer based **joint waterproofing tape** with **polyester** knit fabric, isolating construction and dilatation joints.



**IMPERMO® PU**  
PU Waterproofing Tape

**Polyurethane** waterproofing ready-to-use joint tape with **polyester non-woven** substrate and **160%** extension break, made of three special coated layers. The middle part is composed of waterproofing polyurethane membrane; the other two layers are of non-woven polyester. There are holes of 2 cm on both corners.



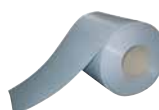
**IMPERMO®**  
Sodium Bentonite Based Water Swellable Tape

Sodium bentonite and butyl rubber based water **swellable** tape for joints. Makes concrete joints waterproof by swelling upon contact with water.



**IMPERMO® ACRYL-300**  
Acrylic Based Water Swellable Tape

Acrylic polymer and rubber based, high performance, hydrophilic **water stop**, elastic water swellable tape for joints. Makes concrete joints waterproof by swelling up to 300% upon contact with water.



**IMPERMO® COMBI**  
Waterproofing Tape for Dilatation

Ready-to-use **thermoplastic** elastomer based tape for dilatation joints.



**IMPERMO®**  
Waterproofing Mesh

Waterproofing mesh with **high alkaline resistance**, woven with glass fiber, used to increase the resistance against capillary crack formation and support waterproofing systems where resistance to higher water pressure is required.





Application Areas		Products																	
		POLYMER MS	POLYMER MS FLUID	AQUAMER HB	AQUAMER HB INVISIBLE	AQUAFIX C	AQUAFIX EXPAN	AQUAFIX	AQUAFIX S	AQUAFIX PRO	AQUAFIX LIKIT C	AQUAFIX LIKIT	AQUASTOP	AQUACEMENT 2K 251	AQUACEMENT 2K 250	AQUACEMENT 2K 207	AQUACEMENT 2K 205	AQUACEMENT UV500	
FOUNDATIONS and CURTAIN WALLS	Foundation concrete waterproofing					●	●	●	●	●	●	●							
	Stopping the water coming from the ground					●	○	●	●	●				○					
	Isolation of elevator pits					●	●	●	●		●	●		●					
	Positive waterproofing in reinforced concrete shear walls	●	●			●	●	●	●				●	●	○				
	Curtain wall concrete where negative waterproofing is required					●	●	●	●		●	●	●						
	Waterproofing curtain wall poured with one sided mold					●	●	●	●		●	●							
	Waterproofing in cold joints					●	●	●	●										
	External waterproofing of retaining walls					○			○	○				●	●	●			●
	Waterproofing of concrete exposed to sulphate and corrosive salts						●			●									
	External waterproofing of foundation sub-basement	●	●	○		○	●		○	○				●	●	●			●
	Stopping the pressurized water												●						
	Waterproofing of basements against water and moisture					●	○	●	●				●	○					
ROOFS and BALCONIES	In intersections of chimneys, ventilations and skylights	●	●	○	●													●	
	Transparent waterproofing on existing ceramics, in areas such as balconies, terraces				●														
	Waterproofing of terrace gardens and green roofs	○	○																
	Waterproofing of terrace roofs parapets (to be covered)	○	○										●	●	●	○	○		
	Waterproofing of terrace roofs parapets (to be left uncovered, UV resistant)	●	●	●	●														●
	Waterproofing of reinforced concrete inclined roofs	●	●	●	●								●	●	●	○	●		●
	Waterproofing where crack bridging is required	●	●		○								●	●	●	○	●		●
	Use with waterproofing mesh		●	●									●	●	●				●
	Waterproofing of dilatation joints													●	●	●			
	Waterproofing of concealed gutters	●	●	○	○									○					●
WET AREAS	Waterproofing of wet areas such as bathrooms, kitchens, and toilets at construction stage	●	●	○									●	●	●	●	○		
	Waterproofing in wet areas with floor heating	●	●	○									●	●	●			○	
	Transparent waterproofing on existing ceramics in wet areas				●														
WATER TANKS and SWIMMING POOLS	Structural waterproofing of pool and foundation concrete					●		●	●	○	●	●							
	Positive side waterproofing of pools					○	●	○	○				●	●	●			○	
	Negative side waterproofing of pools					●		●	●										
	Positive side waterproofing of reinforced concrete water tanks	●	●	○	○	○	●	○	○				●	●	●			○	
	Negative side waterproofing of reinforced concrete water tanks					●		●	●				○						
	Compatibility to potable water	○	○	●	●	●	●	●	●				●	●	●	●	●		●
ARCHITECTURAL SOLUTIONS	Transparent waterproofing of facades covered with glass mosaic				●														
	Transparent waterproofing of historical buildings				●														
	Transparent waterproofing of surfaces, such as stone, brick, terracotta				●														
	Waterproofing of concrete, stone, marble, tile, wood, glass, metal, brick, gas beton, galvanised, aluminium, sheet metal surfaces	●	●	●	●														







**POLYMERA® MS 925**  
MS Polymer Based Sealant (LM)

**MS polymer** based, single component, **low modulus (LM)**, elastic, solvent and isocyanate free hybrid construction sealant.



**POLYMERA® MS 940**  
MS Polymer Based Sealant (HM)

**MS Polymer** based, single component, **high modulus (HM)**, elastic, solvent and isocyanate free hybrid construction joint filler and adhesive. It is developed for **bonding** and **sealing** roof, facade, sandwich panel, container, wood, metal, composite and prefabricated assembly works.



**PU 970**  
Polyurethane Low Modulus Sealant (LM)

**Polyurethane** based, single component, **low modulus (LM)** sealant which is an ideal product for **static** and **dynamic** expansion joints of construction elements.



**PU 971**  
Polyurethane High Modulus Sealant (HM)

**Polyurethane** based, single component, **high modulus (HM)** sealant and adhesive which is developed to provide **adhesion** and **waterproofing** in roofs, facades, sandwich panels, containers, wood, metal, composite and prefabricated structural elements.



**POLAN® 980 2K**  
Coal Tar Modified Polyurethane Based Sealant and Waterproofing Material

**Coal tar modified polyurethane** based, double component, elastomeric, cold applied, self-levelling sealant and waterproofing material which has high mechanical and chemical resistance. It is **resistant to jet fuels** and **oils**.



**AS 910**  
Siliconized Acrylic Sealant

**Acrylic** dispersion based, **silicone** added, single component, multi-purpose sealant resistant to weather conditions. It is an economical and ideal sealant for **static** joints of the buildings.



**SS 930E**  
Multi-Purpose Silicone Sealant

**Silicone** based, **multi-purpose**, single component (acetoxo) sealant which is cured with the moisture in the air. Can be used indoor and outdoor.



**SS 930**  
Multi-Purpose Silicone Sealant

**Silicone** based, **multi-purpose**, single component (acetoxo) sealant which is cured with the moisture in the air. Can be used indoor and outdoor.



**SS 930X**  
Multi-Purpose Silicone Sealant

**Silicone** based, **multi-purpose**, single component (acetoxo) sealant which is cured with the moisture in the air. Can be used indoor and outdoor.



**SS 931**  
Universal Silicone Sealant (100% Silicone)

High quality, **multi-purpose**, **100% silicone**, solvent-free, single component (acetoxo) sealant which is cured with the moisture in the air. Can be used indoor and outdoor.



**SS 932**  
Sanitary Silicone Sealant

High quality, **100% silicone**, solvent-free, single component (acetoxo) sealant which is cured with the moisture in the air. Can be used in wet areas such as **bathrooms** and **kitchens** for sealing and filling purposes.



**SS 932X**  
Shower Cabin Silicone Sealant

High quality, **100% silicone**, solvent-free, single component (acetoxo) sealant which is cured with the moisture in the air. Can be used in wet areas such as **shower cabins**, **bathrooms** and **kitchens** for sealing and filling purposes.



**SS 933 RTV**  
Heat Resistant Silicone Sealant

High quality, solvent-free, single component (acetoxo), **red colored silicone** sealant which is cured with the moisture in the air. Developed for the applications of engines and mechanical parts exposed to **high temperatures**.



**SS 934 CONSTRUCTION**  
Neutral Construction Silicone Sealant

High quality, single component, **100% silicone**, solvent-free sealant with **neutral oxime structure**, cured with the humidity in the air, which can be used in all kinds of indoor and outdoor areas of the building.



**SS 994 FACEDE**  
Weatherseal Silicone Sealant

Single component, weather resistant, high strength, **neutral alkoxy structure**, **100% silicone** sealant developed for facades joints.



**SS 935**  
Marble and Natural Stone Silicone Sealant

High quality, **100% silicone**, single component, neutral, solvent-free sealant which is cured with the moisture in the air. Can be used in joints of construction materials such as **natural stone**, **marble** and **granite**.

Product Color Chart		MS Polymers		Hybrid Polymers		MS Polymer Sealants		Polyurethane Sealants		Acrylic Sealants		Silicone Sealants										MS Polymer Adhesives				Silicone Adhesives			
		POLYMER MS	POLYMER MS FLUID	AQUAMER HB	AQUAMER HB INVISIBLE	POLYMER MS 925	POLYMER MS 940	PU 970	PU 971	AS 910	SS 930E	SS 930	SS 930X	SS 931	SS 932	SS 932X	SS 933 RTV	SS 934 CONSTRUCTION (MATTE)	SS 934 CONSTRUCTION (GLOSSY)	SS 994 FACADE	SS 935	SS 936	SS 937	SS 939	POLYMER MS 950	POLYMER MS 960	POLYMER MS 953	RAPIDO HIGH TACK	EPDM BOND
	Transparent				✓						✓	✓	✓	✓	✓	✓		✓			✓	✓	✓	✓			✓		
	White					✓	✓	✓	✓	✓	✓	✓	✓	✓	✓		✓				✓	✓		✓	✓			✓	
	Off White	✓	✓																										
	Grey	✓	✓	✓		✓	✓	✓	✓	✓		✓	✓				✓				✓	✓			✓				
	Silver Grey											✓	✓					✓											
	RAL 7046																✓												
	Anthracite											✓	✓				✓												
	Black	✓	✓			✓	✓	✓	✓	✓		✓	✓	✓			✓		✓	✓	✓	✓		✓	✓				✓
	RAL 1013											✓	✓				✓												
	RAL 1015											✓	✓				✓												
	Bronze											✓	✓					✓											
	Silvery Copper																	✓											
	Golden Oak									✓		✓	✓				✓												
	Dark Brown					✓	✓			✓		✓	✓				✓				✓	✓							
	Red															✓													
	Brick Red	✓	✓																										
	Roof Green	✓	✓																										

\*All colors shown in this catalogue are the closest possible to the original colors, depending on the printing techniques. It may show slight differences with the original colors. The table above is for the standard and special colors in the FIXA price list. Other RAL colors are also produced upon request.





**SS 936**  
Neutral Silicone Sealant

High quality, single component, **100% silicone**, solvent-free sealant with **neutral oxime structure**, cured with the humidity in the air, which can be used in indoor and outdoor.



**SS 937**  
Aquarium Silicone Sealant

High quality, **100% silicone**, single component (acetoxyl), **solvent-free** sealant cured with the moisture in the air. Specifically developed for **aquariums** and can be used indoor and outdoor.



**SS 939**  
Mirror Silicone Sealant

High quality, **100% silicone**, single component, neutral, solvent-free sealant cured with the moisture in the air for bonding **mirrors** and ceramics without damaging the glazed surfaces.



**PU 960**  
Multi-Purpose Polyurethane Foam

Single component, general purpose **polyurethane** foam which is cured by expanding with the moisture in the air.



**PU 962**  
Multi-Purpose Professional Polyurethane Foam

Single component, general purpose **polyurethane** foam which is cured by expanding with the moisture in the air, used with its special application gun.



Repair, Reinforcement and Restoration



**REPAIRFIX® 5**  
Fine Repair Mortar

Cement based, single component, polymer added, **fine aggregated** surface repair and smoothing mortar which offers a smooth finishing in concrete surfaces. Complies with **R2** class.



**REPAIRFIX® 5W**  
Fine Repair Mortar (White)

**White** cement based, single component, polymer added, **fine aggregated** surface repair and smoothing mortar which offers a smooth finishing in concrete surfaces. Complies with **R2** class.



**REPAIRFIX® 30**  
Coarse Repair Mortar

Cement based, single component, polymer added, **coarse aggregated** surface repair and smoothing mortar which offers a smooth finishing in concrete surfaces. Complies with **R2** class.



**REPAIRFIX® 30W**  
Coarse Repair Mortar (White)

**White** cement based, single component, polymer added, **coarse aggregated** surface repair and smoothing mortar which offers a smooth finishing in concrete surfaces. Complies with **R2** class.



**REPAIRGROUT EXPAN T60**  
High Strength Shrinkage Compensated Grout Mortar

Cement based, single component, **shrinkage compensated, thixotropic, high strength** structural grout mortar. Complies with **R4** class.



**REPAIRGROUT EXPAN-S T60**  
High Strength Sulphate Resistant Shrinkage Compensated Grout Mortar

Cement based, single component, **sulphate resistant, shrinkage compensated, thixotropic, high strength** structural grout mortar. Complies with **R4** class.



**REPAIRGROUT EXPAN T45**  
High Strength Shrinkage Compensated Grout Mortar

Cement based, single component, **shrinkage compensated, thixotropic, high strength** structural grout mortar. Complies with **R4** class.



**REPAIRGROUT EXPAN T35**  
High Strength Shrinkage Compensated Grout Mortar

Cement based, single component, **shrinkage compensated, thixotropic, high strength** structural grout mortar. Complies with **R3** class.



**REPAIRGROUT GP F65**  
Shrinkage Compensated Flowable  
Grout and Anchoring Mortar

Cement based, single component, **shrinkage compensated, high strength** grout and anchoring mortar in **fluid consistency**. Complies with **R4** class, does not segregate or bleed.



**REPAIRGROUT GP-S F65**  
Shrinkage Compensated Flowable Sulphate  
Resistant Grout and Anchoring Mortar

Cement based, single component, **shrinkage compensated, high strength** grout and anchoring mortar in **fluid consistency**. Complies with **R4** class, does not segregate or bleed. **Resistant to sulphate**.



**REPAIRGROUT GP F50**  
Shrinkage Compensated Flowable  
Grout and Anchoring Mortar

Cement based, single component, **shrinkage compensated, high strength** grout and anchoring mortar in **fluid consistency**. Complies with **R4** class, does not segregate or bleed.



**REPAIRGROUT GP F40**  
Shrinkage Compensated Flowable  
Grout and Anchoring Mortar

Cement based, single component, **shrinkage compensated, high strength** grout and anchoring mortar in **fluid consistency**. Complies with **R3** class, does not segregate or bleed.



**REPAIRGROUT FAST**  
Fast Setting Shrinkage Compensated Flowable  
Grout Mortar

Cement based, single component, **shrinkage compensated, fast setting, high strength** grout mortar in **fluid consistency** which does not segregate or bleed. Complies with **R4** class.



**RENOVAFIX® HK**  
Natural Hydraulically Lime (NHL 3.5)

**Natural hydraulic lime** for **renovation of masonry buildings**, repairing plaster and as a binding in historical building repairing mortars like special Horasan mortar.



**RENOVAFIX® PL**  
Pozzolanic Lime Based Historical Building Repair  
Mortar

**Pozzolanic lime** based, single component, fiber supported, cement-free, high strength, thixotropic repair mortar for historical buildings.



**RENOVAFIX® NL**  
Natural Hydraulic Lime Based Ready-Mixed  
Plaster

**Natural hydraulic lime** based, single component, **cement-free**, fiber supported, special restoration plaster mortar for historical masonry buildings.



**REPOX® 301**  
Epoxy Repair Mortar

**Epoxy** resin based, three component epoxy **repair** mortar, resistant to corrosive chemicals. Used in repairing concrete surfaces which are exposed to mechanical impacts.



**REPOX® 302**  
Epoxy Anchoring and Mounting Mortar

**Epoxy** resin based, three component epoxy **anchoring** and **mounting** mortar, highly resistant to corrosion. Used for anchoring bolts and irons to concrete, rock or walls.



**REPOX® 310**  
Epoxy Repair, Adhesive and Assembly Mortar

**Epoxy** resin based, **solvent free**, thixotropic, double component structural repair, adhesive and assembly mortar.



**REPOX® 340**  
Polyester Chemical Anchoring Adhesive

Multi-purpose, **polyester resin** based, double component chemical anchoring adhesive in cartridge. Cures fast and has high strength.





### MONOFIX® 80 Basalt Aggregated Surface Hardener

Abrasion resistant **powder surface hardener** consisting of a mixture of special type cement, **basalt** aggregate and performance-enhancing chemical additives, applied monolithically on fresh concrete surfaces. It provides wear, impact, dust and abrasion resistance against **light** and **medium** loads on concrete surfaces.



### MONOFIX® 100 Quartz Aggregated Surface Hardener

Abrasion resistant **powder surface hardener** consisting of a mixture of special type cement, high quality **quartz** aggregate and performance-enhancing chemical additives, applied monolithically on fresh concrete surfaces. It provides wear, impact, dust and abrasion resistance against **light** and **medium** loads on concrete surfaces.



### MONOFIX® 200 Mineral and Corundum Aggregated Surface Hardener

Abrasion resistant **powder surface hardener** consisting of a mixture of special type cement, high quality **mineral** and **corundum** aggregate and performance-enhancing chemical additives, applied monolithically on fresh concrete surfaces. It provides wear, impact, dust and abrasion resistance against **light**, **medium** and **heavy** loads on concrete surfaces.



### MONOFIX® 300 Corundum Aggregated Surface Hardener

Abrasion resistant **powder surface hardener** consisting of a mixture of special type cement, high quality **corundum** aggregate and performance-enhancing chemical additives, applied monolithically on fresh concrete surfaces. It provides wear, impact, dust and abrasion resistance against **light**, **medium** and **heavy** loads on concrete surfaces.



### MONOFIX® LIQUID Dusting Preventive Liquid Surface Hardener

Low viscosity, colorless **liquid surface hardener** that protects the surface from dusting and abrasion. Increases the resistance of the surface against water. Enhances chemical and mechanical resistance.



### MONOPRIMER® Primer for Floor

**Acrylic based**, ready-to-use, single component **primer**, used on absorbent surfaces and on surfaces that are likely to dust.



### MONOFLOOR® 100 - C35 Ready to Use Self-Leveling Compound (2 - 10 mm)

**C35 class, cement based self-levelling floor screed** which can be applied up to 10 mm thickness, to eliminate defects and roughnesses on the surface.



### MONOFLOOR® 100 - C25 Ready to Use Self-Leveling Compound (2 - 10 mm)

**C25 class, cement based self-levelling floor screed** which can be applied up to 10 mm thickness, to eliminate defects and roughnesses on the surface.



### MONOFLOOR® 100 - C25E Ready to Use Self-Leveling Compound (2 - 10 mm)

**C25 class, cement based self-levelling floor screed** which can be applied up to 10 mm thickness, to eliminate defects and roughnesses on the surface.



### MAXIFLOOR® Gypsum Based Ready-Mixed Floor Mortar

**Gypsum (calcium sulphate) based floor mortar** that dries quickly and allows thick application (2 - 10 cm), used for the purpose of eliminating and correcting surface defects on slab concrete.



### TOPFLOOR® Gypsum Based Self-Levelling Floor Mortar (2 - 10 mm)

**Gypsum (calcium sulphate) based self-levelling floor mortar** applied 2 - 10 mm, used for the purpose of eliminating and correcting surface defects on slab concrete.



### FLOORFIX® Rapid 10 Acrylic Based High Performance PVC Floor Covering Adhesive

**Acrylic based**, solvent-free, single component, multi-purpose dispersion floor covering adhesive for bonding PVC and linoleum floor coverings to pre-leveled surfaces. Adheres **fast** and **strongly**.



### FLOORFIX® Flex 30 Acrylic Based Flexible PVC Floor Covering Adhesive

**Acrylic based**, solvent-free, single component, **flexible** dispersion floor covering adhesive for bonding PVC and linoleum floor coverings to pre-leveled surfaces.



### FLOORFIX® Tacky 25 Acrylic Based Flexible PVC Floor Covering Adhesive

**Acrylic based**, solvent-free, single component, **flexible** dispersion floor covering adhesive with **improved stickiness** for bonding PVC and linoleum floor coverings to pre-leveled surfaces. Offers **long workability**.



### FLOORFIX® Eco 20 Acrylic Based PVC Floor Covering Adhesive

**Acrylic based**, solvent-free, single component, dispersion floor covering adhesive for bonding PVC and linoleum floor coverings to pre-leveled surfaces.







**REPOX® A**  
Solvent-Free Epoxy Surface Primer

**Epoxy** resin based; solvent free, double component epoxy **floor primer**. Forms a film layer on cement based mineral surfaces. Can be used as primer under epoxy and polyurethane based coatings and paints.



**REPOX® AD**  
Solvent-Free Epoxy Surface Primer with Filler

**Epoxy** resin based; solvent free, double component, epoxy **floor primer** with low quantity of filler for concrete and cement based mineral surfaces. Can be used as primer under epoxy and polyurethane based floor coatings.



**REPOX® AE**  
Solvent-Free Epoxy Impregnation Surface Primer

**Epoxy** resin based; solvent free, double component, low viscosity epoxy **impregnation surface primer** and **penetration material**. Can be used as primer under epoxy and polyurethane based floor coatings and paints for impregnation or can be used alone to prevent the dusting of the concrete.



**REPOX® AH**  
Solvent-Free Moisture Tolerant Epoxy Surface Primer

**Epoxy** resin based, solvent free, double component, low viscosity, moisture tolerant **epoxy primer**, penetration and impregnation material for concrete and cement based mineral surfaces.



**REPOX® CAP**  
Solvent-Free Epoxy Ceramic Bonding Primer

**Epoxy** resin based, solvent free, double component, non-absorbent **ceramic bonding primer** which contains silica sand. Used on ceramics and functions as a bonding bridge for epoxy and polyurethane coatings and paints which will be applied on it.



**REPOX® AC**  
Solvent-Free Epoxy Colored Primer and Mid-Coat

**Epoxy** resin based, solvent free, double component, **colored epoxy surface primer** and mid-coat material.



**REPOX® AW**  
Waterborne Epoxy Surface Primer

**Epoxy** resin based, double component, **waterborne** surface primer for concrete and cement based mineral surfaces.



**REPOX® 510**  
Solvent-Free Epoxy Coating for Floors

**Epoxy** resin based, double component, **self-levelling**, solvent free floor coating material with high chemical resistance and mechanical strength and finishes in a flat surface.



**REPOX® 520**  
Textured Epoxy Coating for Floors

**Epoxy** resin based, double component, solvent-free, **thixotropic floor coating material** with an orange peel appearance (**textured**).



**REPOX® 550**  
Epoxy Paint and Coating

**Epoxy** resin based, double component, solvent-free, durable and easy-to-clean **paint** and **coating** material with high surface hardness and high chemical, water and mechanical resistance.



**REPOX® 560WB**  
Waterborne Epoxy Paint and Coating

**Epoxy** resin based, double component, durable and easy-to-clean, waterborne **paint** and **coating** material with high chemical, moisture, water and mechanical resistance.



**POLAN® 590**  
Polyurethane Flexible Self-Levelling Coating

**Polyurethane** based, double component, solvent-free, **flexible, self-levelling floor coating** material with mechanical strength.



**POLAN® AF**  
Polyurethane Aliphatic Top Coat Paint (UV Resistant)

**Polyurethane/aliphatic** isocyanate based, double component, solventborne, **UV resistant, glossy** top coating which is resistant to scratching with high color stability and mechanical resistance.



**POLAN® AFM**  
Polyurethane Aliphatic Top Coat Paint Semi-Matte Finish (UV Resistant)

**Polyurethane/aliphatic** isocyanate based, double component, solventborne, mechanically resistant, **UV resistant, semi-matte** top coating with high color stability and resistance to scratching.



**DUROPAIN®**  
Floor Paint

**Chlorine-rubber** resin based, thixotropic, cold and thick applied **marking** and **floor** paint.



**FIXA®**  
Polyethylene Backer Rod

Closed cell structured, **polyethylene (PE)** based backer rod, used in adjusting joint depth.



**POLIMIX**  
Polypropylene Fiber

**Polypropylene** based **fiber**, resistant to acids and alkaline, produced especially for concrete and mortars to **reduce the cracking** of concrete.



**STEELMIX**  
Steel Wire for Concrete Reinforcement

Low-carbon **steel wire**, produced by cold drawing method, especially for concrete, which provides **high flexural** and **impact strength** in **concrete**.

Thermal Insulation Systems



**FIRSTLEVEL®**  
Multi-Purpose Primer

**Acrylic** based, ready-to-use, single component **primer** for absorbent surfaces.



**DECOPRIMER®**  
Decorative Plaster Primer

**Acrylic dispersion** based, single component, white colored, waterborne **primer** with high covering properties which can be used under all cement-based interior and exterior cladding materials.



**AKRILAN® 700**  
Acrylic Adhesive for Thermal Insulation Systems

**Acrylic dispersion** based, high performance, **ready-to-use**, paste type adhesive for bonding thermal insulation boards.



**PU 961**  
PU Adhesive Foam

Single component, **polyurethane foam** which is cured very fast with the humidity in the air. It is applied with its special gun and used for fast and strong adhesion of thermal insulation boards.



**STRAFIX®**  
Thermal Insulation Board Adhesive Mortar

Cement-based, polymer added, high performance, flexible **adhesive** mortar with high stability, for thermal insulation boards.



**STRAFIX®**  
Stone Wool Adhesive Mortar

Cement-based, polymer added, high performance, flexible **adhesive** mortar with high stability, for **stone wool** thermal insulation boards.



**PROX® 540**  
Thermal Insulation Board Adhesive Mortar

Cement-based **adhesive** mortar for thermal insulation boards.



**STRAFIX®**  
Thermal Insulation Board Plastering Mortar  
Fiber Supported (Fine)

Cement based, polymer added, high performance, **fiber supported**, **fine aggregated plastering** mortar for thermal insulation boards.



**STRAFIX®**  
Thermal Insulation Board Plastering Mortar  
Fiber Supported (Coarse)

Cement based, polymer added, high performance, **fiber supported**, **coarse aggregated plastering** mortar for thermal insulation boards.



**STRAFIX®**  
Thermal Insulation Board Adhesive and  
Plastering Mortar

Cement based, polymer added, high performance, flexible **adhesive** and **plastering** mortar for thermal insulation boards.



**STRAFIX®**  
Decorative Plaster 15  
Mineral Textured - White (Fine)

**White** cement based, single component, polymer added, **decorative** facade top coat with **1.5 mm mineral granular texture**. It is applied with a trowel.



**STRAFIX®**  
Decorative Plaster 20  
Mineral Textured - White (Coarse)

**White** cement based, single component, polymer added, **decorative** facade top coat with **2 mm mineral granular texture**. It is applied with a trowel.



**STRAFIX®**  
Decorative Plaster C30  
Fine Line Patterned - White

**White** cement based, single component, polymer added, **fine line patterned decorative** facade top coat. It is applied with a trowel.



**STRAFIX®**  
Decorative Plaster C40  
Coarse Line Textured - White

**White** cement based, single component, polymer added, **coarse line textured decorative** facade top coat. It is applied with a trowel.



**PROX® 550**  
Thermal Insulation Board Plastering Mortar  
Fiber Supported (Fine)

Cement based, **fiber supported, fine aggregated plastering** mortar for thermal insulation boards.



**PROX® 552**  
Thermal Insulation Board Plastering Mortar  
Fiber Supported (Coarse)

Cement based, **fiber supported, coarse aggregated plastering** mortar for thermal insulation boards.



**PROX® 581**  
Decorative Plaster Mineral Textured  
White (Fine)

**White** cement based, single component, polymer added, **decorative** facade top coat with **1.5 mm mineral granular texture**. It is applied with a trowel.



**PROX® 582**  
Decorative Plaster Mineral Textured  
White (Coarse)

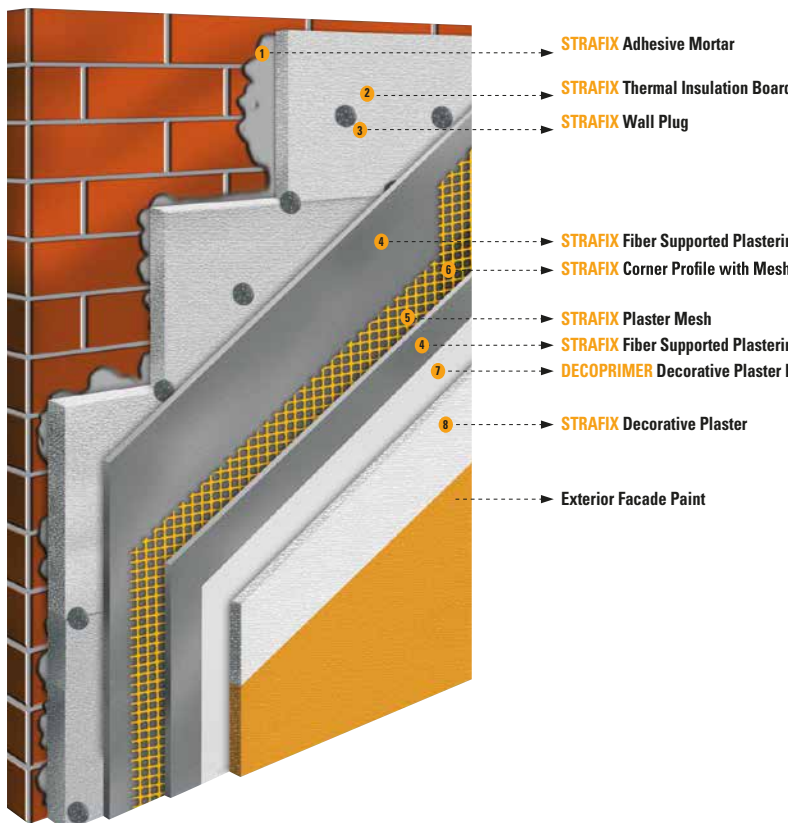
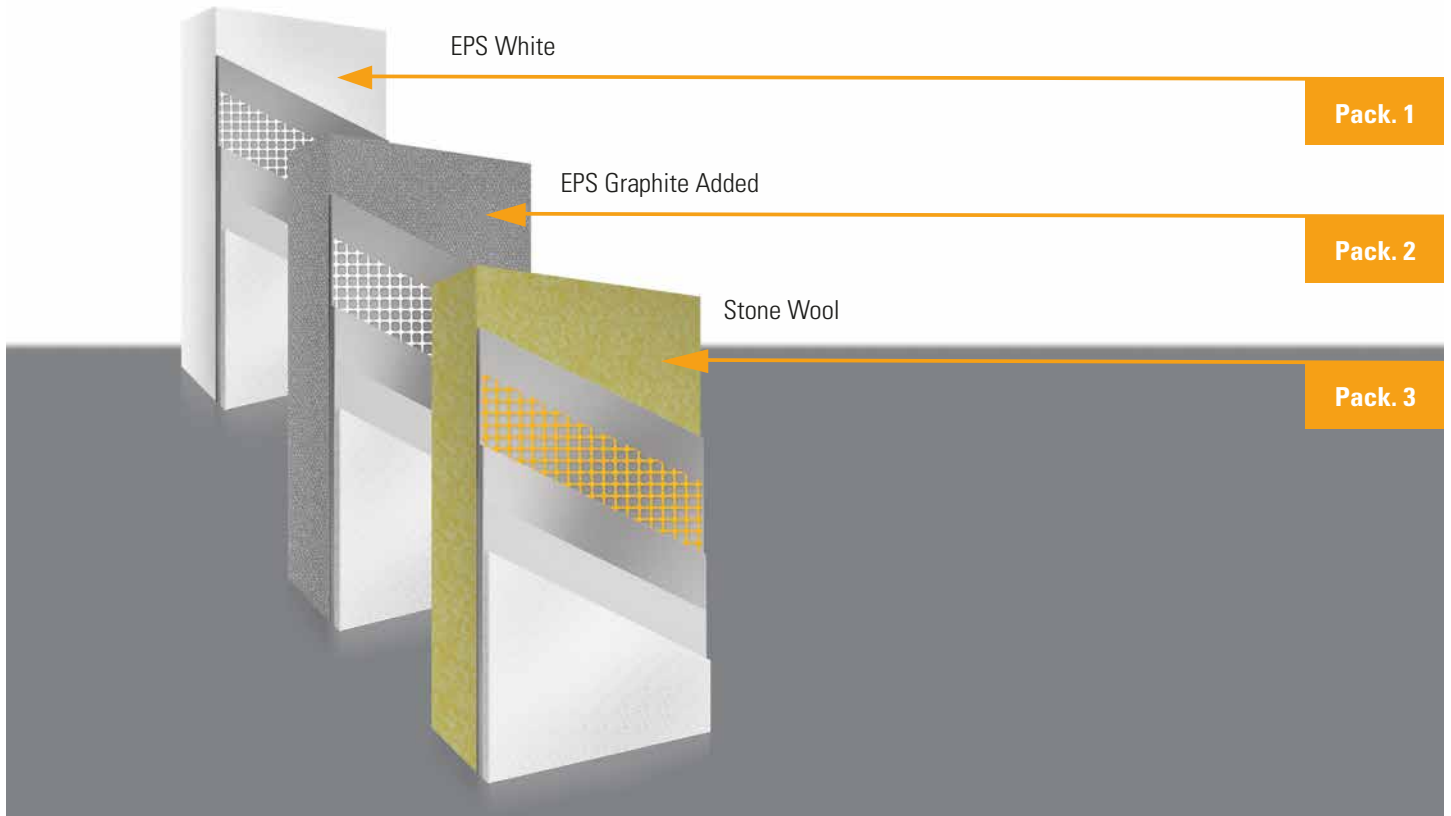
**White** cement based, single component, polymer added, **decorative** facade top coat with **2 mm mineral granular texture**. It is applied with a trowel.





**STRAFIX Thermal Insulation Systems** are developed by FIXA Construction Chemicals for **reliable, longlasting and economical insulation**. **STRAFIX Thermal Insulation Systems** provide you up to **50% energy savings** and reduces your expenditures by protecting both from heat and cold and allowing the heat to be evenly distributed in the building.

There are **3** types of packages:



- 1 - STRAFIX Adhesive Mortar
- 2 - STRAFIX Thermal Insulation Board
- 3 - STRAFIX Wall Plug
- 4 - STRAFIX Fiber Supported Plastering Mortar - 1. Layer
- 5 - STRAFIX Corner Profile with Mesh
- 6 - STRAFIX Plaster Mesh
- 7 - STRAFIX Fiber Supported Plastering Mortar - 2. Layer
- 8 - DECOPRIMER Decorative Plaster Primer
- 9 - STRAFIX Decorative Plaster

Product	m <sup>2</sup> /Consumption (EPS)	m <sup>2</sup> /Consumption (Stone Wool)
1- STRAFIX Adhesive Mortar	4 kg/m <sup>2</sup>	5 kg/m <sup>2</sup>
2- STRAFIX Thermal Insulation Board	1 m <sup>2</sup>	1 m <sup>2</sup>
3- 1 STRAFIX Wall Plug	6 pieces	-
3- 2 STRAFIX Stone Wool Plug	-	6 pieces
4- STRAFIX Fiber Supported Plastering	5 kg/m <sup>2</sup>	5 kg/m <sup>2</sup>
5- STRAFIX Plaster Mesh	1.1 m <sup>2</sup>	1.1 m <sup>2</sup>
6- STRAFIX Corner Profile with Mesh	0.25 mt	0.25 mt
7- DECOPRIMER Decorative Plaster Primer	0.10 kg/m <sup>2</sup>	0.10 kg/m <sup>2</sup>
8- STRAFIX Decorative Plaster	2.7 kg/m <sup>2</sup>	2.7 kg/m <sup>2</sup>

*Consumption rates are given for 1 m<sup>2</sup>. Please consult FIXA Construction Chemicals for further information.*



### AQUAPLUS® Waterproofing Mortar and Screed Admixture

Mortar and screed admixture that allows ease of application by increasing **waterproofing** and workability of **plaster** and **floor** screeds.



### AQUALATEX® Mortar and Screed Admixture with Waterproofing and Bonding Properties

Multi-purpose, liquid synthetic rubber emulsion which increase the adherence and **waterproofing** properties of the the cement based mortars.



### ANTIFREEZE 100 Concrete and Mortar Admixture for Anti-Frost

**Polynaphthalene sulfonate** and **nitrate salt based** concrete and mortar admixture which increases the fluidity and accelerates the setting of the concrete in weather conditions when the risk of frost is high and gives **resistance to the concrete against frost**. Does not contain chlorine.



### POLYFORM 100 Wooden Mold Release Agent

**High quality, ready-to-use mold release** agent that allows the mold to be separated easily from the concrete. Contains a special emulsifier blend and provides a smooth and a spotless surface.



### POLYFORM 300 General Purpose Plywood, Wooden Mold Release Agent

Chemical emulsion based, **high quality, ready-to-use, general purpose** mold release agent that allows the mold to be separated easily from the concrete. Contains a special emulsifier blend and provides a smooth and spotless surface.



### POLYFORM K Concentrated Mold Release Agent

**High quality, concentrated** mold release agent that allows the mold to be separated easily from the concrete. Contains a special emulsifier blend and provides a smooth and spotless surface.



### POLYFORM STEEL Steel, Tunnel Mold Release Agent

**High quality, ready-to-use** mold release agent that allows the mold to be separated easily from the concrete by preventing the adhesion between the fresh concrete and the mold. **Resistant to steam cure**. Provides a smooth and spotless surface. Especially developed for effective results in large surface concrete molds.



### POLYFORM GREEN Vegetable Oil Based Mold Release Agent

**Vegetable oil** based, environmental friendly, high quality, **ready-to-use** mold release agent that allows the mold to be separated easily from the concrete. **Does not contain mineral oils**. Can be used in all types of mold systems and provides a smooth and spotless concrete surface.



### KURFIX® 200 Acrylic Based, Waterborne Curing Compound

**Acrylic** emulsion based, white colored and waterborne liquid **curing** compound that prevents quick loss of water from the concrete.



### KURFIX® 300 Solvent Based Curing Compound

Transparent amber-yellow, **hydrocarbon resin** based, solventborne liquid **curing compound** that prevents quick loss of water from the concrete. Forms a film layer which reduces shrinkage cracks on the surface by preventing the water inside the fresh concrete from evaporating.



### KURFIX® 400 Solvent Based Curing Compound and Surface Protector

Transparent yellow color, **hydrocarbon solvents** and **acrylic resin** based, solventborne liquid **curing compound** and **surface protector** which prevents quick loss of water and generates a protective layer, and reduces the abrasion by penetrating the capillary structure of the surface. Forms a film layer which reduces shrinkage cracks on the surface by preventing the water inside the fresh concrete from evaporating. Reduces surface abrasion by binding the particles on the surface stronger to each other.





**BETOPRIMER®**  
Primer for Exposed Concrete Surfaces

**Acrylic polymer** based, single component **plaster primer** with quartz granular for exposed concrete surfaces to increase the adherence of the surface and workability time, applied before cement or gypsum based plasters.



**PRIMEX®**  
Primer for Exposed Concrete and Gypsum Based Plaster

**Acrylic polymer** based, single component **economical plaster primer** with quartz granular for exposed concrete surfaces to increase the adherence of the surface and workability time, applied before cement or gypsum based plasters.



**PERFIX®**  
Insulation Plaster with Perlite (White)

**White** cement based insulation plaster with **perlite** with increased thermal and sound insulation properties, made with special particle-sized fillers and performance increasing chemicals.



**FIXA®**  
Ready-Mixed Hand Plaster (Coarse)

Cement based, single component, ready-mixed **coarse** plaster with chemical and fiber additives, applied **manually**.



**FIXA®**  
Ready-Mixed Hand Plaster (Coarse) - White

**White** cement based, single component, ready-mixed **coarse** plaster with chemical and fiber additives, applied **manually**.



**FIXA®**  
Ready-Mixed Machine Applied Fiber Supported Plaster (Coarse)

Cement based, single component, ready-to-use **coarse** plaster with chemical and fiber additives, applied **with machine** or manually.



**FIXA®**  
Ready-Mixed Machine Applied Fiber Supported Plaster (Coarse) White

**White** cement based, single component, ready-to-use **coarse** plaster with chemical and fiber additives, applied **with machine** or manually.



**FIXA®**  
Ready-Mixed Hand Plaster (Fine)

Cement based, single component, ready-mixed **fine** plaster with chemical additives, applied manually or by **machine**.



**FIXA®**  
Ready-Mixed Hand Plaster (Fine) - White

**White** cement based, single component, ready-mixed **fine** plaster with chemical additives, applied manually or by **machine**.



**FIXA®**  
Cement Based Thin Satin Putty (White)

**White** cement based, single component, **thin satin putty** with chemical additives which covers all surface imperfections and prepares the surface to paint.



**FIXA®**  
Roof Ridge Adhesive Mortar

Cement based, single component high performance adhesive mortar with chemical additives with high stability in **assembling roof ridges**.



**FIXA®**  
Gas Concrete Bonding Mortar

Cement based, high performance, single component gas concrete bonding mortar with chemical additives.







**FIXA®**  
Extra Tile and Ceramic Adhesive Mortar C1TE

Cement based, single component, polymer added, extra featured powder mortar with **reduced slip** and **long working time**, used for bonding tiles and ceramics.



**FIXA®**  
Extra Tile and Ceramic Adhesive Mortar C1TE (White)

**White** cement based, single component, polymer added, extra featured powder mortar with **reduced slip** and **long working time**, used for bonding tiles and ceramics.



**FIXA® FLEXUP**  
Tile and Ceramic Adhesive Mortar C1TE

Cement based, single component, polymer added, high performance powder mortar with **reduced slip** and **long working time**, used for bonding covering materials such as granite and ceramics.



**FIXA® FLEXUP**  
Tile and Ceramic Adhesive Mortar C1TE (White)

**White** cement based, single component, polymer added, high performance powder mortar with **reduced slip** and **long working time**, used for bonding covering materials such as granite and ceramics.



**FIXA®**  
Tile and Ceramic Adhesive Mortar C1T

Cement based, single component powder mortar with **reduced slip**, used for bonding tiles and ceramics.



**FIXA®**  
Tile and Ceramic Adhesive Mortar C1T (White)

**White** cement based, single component powder mortar with **reduced slip**, used for bonding tiles and ceramics.



**PROX® 910**  
Tile and Ceramic Adhesive Mortar C1T

Cement based, single component powder mortar for bonding tiles and ceramics.



**PROX® 911**  
Tile and Ceramic Adhesive Mortar C1T (White)

**White** cement based, single component powder mortar for bonding tiles and ceramics.



**FIXA®**  
Fast Setting Tile and Ceramic Adhesive Mortar C1FT

Cement based, single component, polymer added, **fast setting**, high performance and stability powder adhesive mortar **with reduced slip (C1FT)**.



**FIXA®**  
Fast Setting Tile and Ceramic Adhesive Mortar C1FT (White)

**White** cement based, single component, polymer added, **fast setting**, high performance and stability powder adhesive mortar **with reduced slip (C1FT)**.



**FIXA®**  
Granite Ceramic Adhesive Mortar C2T

Cement based, single component, polymer added, **flexible**, high performance and stability powder adhesive mortar **with reduced slip**.



**FIXA®**  
Granite Ceramic Adhesive Mortar C2T (White)

**White** cement based, single component, polymer added, **flexible**, high performance and stability powder adhesive mortar **with reduced slip**.



**FIXA®**  
FLEX Granite Ceramic Adhesive Mortar C2TE

Cement based, single component, polymer added, **very flexible** high performance and stability powder mortar **with reduced slip** and **long working time**.



**FIXA®**  
FLEX Granite Ceramic Adhesive Mortar C2TE (White)

**White** cement based, single component, polymer added, **very flexible** high performance and stability powder mortar **with reduced slip** and **long working time**.



**PROX® 950**  
FLEX Granite Ceramic Adhesive Mortar C2TE

Cement based, single component, polymer added, **flexible** high performance and stability powder mortar **with reduced slip** and **long working time**.



**PROX® 951**  
FLEX Granite Ceramic Adhesive Mortar C2TE (White)

**White** cement based, single component, polymer added, **flexible** high performance and stability powder mortar **with reduced slip** and **long working time**.





**HIGHFLEX®**  
Granite Ceramic Adhesive Mortar C2TES1

Cement based, single component, polymer added, **S1 class very flexible** high performance and stability powder mortar with **reduced slip** and **long working time**.



**HIGHFLEX®**  
Granite Ceramic Adhesive Mortar C2TES1 (White)

**White** cement based, single component, polymer added, **S1 class very flexible** high performance and stability powder mortar with **reduced slip** and **long working time**.



**HIGHFLEX® PRO**  
Granite Ceramic Adhesive Mortar C2TES2

Cement based, single component, polymer added, **S2 class very flexible** high performance and stability powder mortar with **reduced slip** and **long working time**, with superior qualities.



**HIGHFLEX® PRO**  
Granite Ceramic Adhesive Mortar C2TES2 (White)

**White** cement based, single component, polymer added, **S2 class very flexible** high performance and stability powder mortar with **reduced slip** and **long working time**, with superior qualities.



**HIGHFLEX® FLUID**  
Granite Ceramic Adhesive Mortar C2ES1

Cement based, single component, polymer added, **S1 class very flexible**, high performance and stability powder mortar with **reduced slip** and **long working time** which is easy to apply thanks to its fluidity.



**FIXA® FLEX**  
Granite Ceramic Adhesive Mortar C2TES1  
(Double Component)

**Double component**, very strong and flexible adhesive with **reduced slip** and **long working time**. Component A is a cement based, polymer added powder mortar, component B is a very flexible polymer emulsion.



**FIXA®**  
Fast Setting Granite Ceramic Adhesive Mortar C2FT

Cement based, single component, polymer added, **fast setting**, high performance and stability powder adhesive mortar **with reduced slip** (C2FT).



**FIXA®**  
Fast Setting Granite Ceramic Adhesive Mortar C2FT (White)

**White** cement based, single component, polymer added, **fast setting**, high performance and stability powder adhesive mortar **with reduced slip** (C2FT).



**FIXA®**  
Pool and Wet Floor Adhesive Mortar C2TES1

Cement based, single component, polymer added, **S1 class, very flexible**, high performance adhesive powder adhesive mortar **with extended open time, reduced slip** and **very long working time**.



**FIXA®**  
Pool and Wet Floor Adhesive Mortar C2TES1  
(White)

**White** cement based, single component, polymer added, **S1 class, very flexible**, high performance adhesive powder adhesive mortar **with extended open time, reduced slip** and **very long working time**.



**FIXA®**  
Natural Stone and Brick Adhesive Mortar

Cement based, single component, polymer added, **flexible, thick bed** adhesive mortar with reduced slip and high performance and stability.



**AKRILAN® 200**  
Ready to Use Paste Type Tile Adhesive D2TE

**Acrylic dispersion** based, **ready-to-use**, high performance paste type tile adhesive with **extended open time** and **reduced slip**.



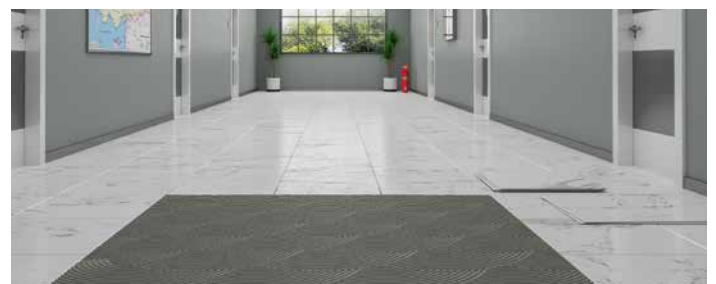
**REPOX® 100**  
Epoxy Based Marble and Granite Adhesive R2TE

**Epoxy** resin based, double component, easy-to-apply, ready-to-use epoxy adhesive mortar with **extended open time** and **reduced slip**, and high bonding strength. Resistant to **chemicals** and **bacteria**, can be cleaned with water.



**ADHERA®**  
Adherence Improving Primer

**Acrylic dispersion based**, single component, viscous primer with high adhesive properties for increasing adherence and balancing the absorption of the surface before covering ceramics on vertical and glassy surfaces or on ceramics.







**FIXA®**  
Tile Grout CG1 (1 - 6 mm)

Cement based, high performance, single component, easy-to-apply tile grout which forms smooth surface for **1 - 6 mm** joints.



**PROX® 1010**  
Tile Grout CG1 (1 - 6 mm)

Cement based, single component, easy-to-apply tile grout which forms smooth surface for **1 - 6 mm** joints.



**FIXA® FLEX**  
Tile Grout CG2WA (1 - 6 mm)

Cement based, high performance, single component, easy-to-apply, **flexible** tile grout which forms **smooth surfaces** for **1 - 6 mm** joints with reduced water absorption and high abrasion resistance.



**FIXA® FLEX**  
Tile Grout CG2WA (6 - 20 mm)

Cement based, high performance, single component, easy-to-apply, **flexible** tile grout which forms **smooth surfaces** for **6 - 20 mm** joints with reduced water absorption and high abrasion resistance. **Resistant to cracking.**



**REPOX® 200**  
Epoxy Based Tile Grout

**Epoxy** resin based, double component, easy-to-apply, ready-to-use, **hygienic epoxy** tile grout which is **resistant to chemicals** and **bacteria**. Has high bonding strength and **can be wiped with water**.



**FIXA®**  
Tile Grout Cleaner

Liquid cleaner with **acidic content** to remove stains and dirt accumulated in tile grouts and joints of covering materials.



**FIXA®**  
Cement Residue Remover

Liquid cleaner with **acidic content** to remove residues such as cementitious mortars, paint, gypsum, tile grout, from the surfaces which are resistant to acids.



**FIXA®**  
Stain Remover

Liquid cleaner with **base content** to remove stains such as oil, coffee, tea from covering materials.



Application Areas	Products				
	FIXA Tile Grout CG1 (1 - 6 mm)	PROX 1010 Tile Grout CG1 (1 - 6 mm)	FIXA FLEX Tile Grout CG2WA (1 - 6 mm)	FIXA FLEX Tile Grout CG2WA (6 - 20 mm)	REPOX 200 Epoxy Based Tile Grout

Covering Materials	Tiles, Ceramics	●	●	●	●	●
	Granite Ceramics - Small and Medium			●	●	●
	Granite Ceramics - Medium and Large			●	●	●
	Natural Granite			●	●	●
	Marble			●	●	●
	Glass Mozaic	○	○	●	●	●
	Natural Stone				●	●
	Terracotta				●	●
	Biscuit Bricks				●	●

Application Areas	Areas with No Spesific Requirements	●	●	●	●	●
	Wet Areas (WC, Bathroom, Kitchen)	○	○	●	●	●
	Terrace Roof, Balcony			●	●	●
	Exterior Facades (Exposed to Temperature Changes)				●	●
	Gardens and Parks				●	
	Areas Frequently Cleaned with Detergents					●
	Turkish Bath and Sauna				●	●
	Thermal Pool, Hot Spring				●	●
	Swimming Pool			●	●	●
	Potable Water Tanks			●	●	●
	Surfaces Exposed to Heavy Pedestrian Traffic			○	●	●
	Food Facilities					●
	Hospitals, Laboratories					●

● Highly Recommended ○ Suitable

Tile Grout Color Chart			
Colors		Cement Based	Epoxy Based
	01 White	✓	✓
	10 Light Grey	✓	
	11 Grey	✓	✓
	12 Dark Grey	✓	
	40 Bahama Beige	✓	✓
	41 Light Brown	✓	
	42 Chocolate Brown	✓	
	44 Dark Brown	✓	
	45 Troy Beige	✓	
	46 Seljuk Beige	✓	
	47 Ottoman Beige	✓	
	48 Sandy Beige	✓	
	70 Ivory	✓	
	74 Hornbeam Brown	✓	
	75 Maroon Brown	✓	
	95 Anthracite	✓	
	99 Black	✓	✓

\*All colors shown in this catalogue are the closest possible to the original colors, depending on the printing techniques. Minimal differences on color shades maybe observed on the product.

## Tile Grout Consumption Table

Joint Width (mm)	1	1	1	1	1	1	2	2	2	2	2	2
Joint Depth (mm)	6	6	8	9	9	9	6	6	8	9	9	9
Tile Dimensions (cm)	5x5	10x10	20x20	20x25	33x33	40x40	20x20	20x25	33x33	40x40	33x60	60x60
Consumption - <b>Cement</b> Based (g)	440	220	110	150	100	90	220	200	180	165	155	110
Consumption - <b>Epoxy</b> Based (g)	410	202	101	138	92	83	202	184	166	152	143	101

Joint Width (mm)	3	3	3	3	3	3	4	4	4	4	4	4
Joint Depth (mm)	6	6	8	9	9	9	6	6	8	9	9	9
Tile Dimensions (cm)	5x5	10x10	20x20	20x25	33x33	40x40	20x20	20x25	33x33	40x40	33x60	60x60
Consumption - <b>Cement</b> Based (g)	1330	660	440	450	300	250	440	400	360	330	310	220
Consumption - <b>Epoxy</b> Based (g)	1225	610	410	415	280	230	410	370	330	305	290	205

Joint Width (mm)	5	5	5	5	5	6	6	6	6	7	7	10
Joint Depth (mm)	8	9	9	9	12	8	9	12	12	9	12	12
Tile Dimensions (cm)	20x20	33x33	40x40	33x60	60x60	40x40	33x60	60x60	60x120	40x40	60x60	60x120
Consumption - <b>Cement</b> Based (g)	740	500	410	390	370	440	470	440	330	580	520	550
Consumption - <b>Epoxy</b> Based (g)	680	465	380	360	340	410	430	410	305	535	475	510





**POLYMER<sup>®</sup> MS 950**  
MS Polymer Based Multi-Purpose Elastic Adhesive

**MS Polymer** based, single component, elastic, solvent and isocyanate free, hybrid **construction sealant** and adhesive.



**POLYMER<sup>®</sup> MS 960**  
MS Polymer Based Auto Glass (Windshield) Adhesive

**MS Polymer** based, single component, elastic, solvent and isocyanate free, hybrid **windshield** adhesive.



**POLYMER<sup>®</sup> MS 953**  
MS Polymer Based Transparent Adhesive

**MS Polymer** based, single component, elastic, solvent and isocyanate free, **transparent** sealant and adhesive.



**RAPIDO<sup>®</sup> HIGH TACK**  
MS Polymer Based Fast Adhesive

**MS polymer** based, single component, hard-elastic, solvent and isocyanate free, **fast-curing, strong** adhesive **with high initial tack**.



**EPDM BOND**  
Neutral Silicone Based EPDM Adhesive

**Neutral silicone based**, single component, solvent or isocyanate free elastic for bonding **EPDM membranes** and coverings.



**POLAN<sup>®</sup> 975**  
Polyurethane Based Wood and Marine Adhesive

**Polyurethane** based, single component, multi-purpose **wood** and **marine** adhesive.







## FIXA YAPI KİMYASALLARI SAN. ve TİC. LTD. ŞTİ.

EN.03.2022.09 - 3000

### Genel Müdürlük

Beylikdüzü Org. San. Bölgesi  
Bakır ve Pirinç San. Sit.  
Mustafa Kurdoğlu Cd. No:14  
Beylikdüzü - İstanbul  
T: 0 212 690 92 92 (pbx)  
F: 0 212 428 62 85

### İstanbul Fabrika

Firuzköy Mahallesi Aziz Cd. No:16  
Avcılar - İstanbul  
T: 0 212 428 62 83 (pbx)  
F: 0 212 428 62 86

### Adana Fabrika


Hacı Sabancı Org. San. Bölgesi  
Süleyman Demirel Bulvarı No:30  
Yüreğir - Adana  
T: 0 322 394 42 42 (pbx)  
F: 0 322 394 42 65

### Ankara Fabrika

Başkent Org. San. Bölgesi  
19. Cadde No:74 Malıköy  
Temelli - Ankara  
T: 0 312 640 16 61 (pbx)  
F: 0 312 640 16 76

 /fixayapikimyasallari

 @fixayapi

 fixa\_yapi\_kimyasallari

 Fixa Yapı Kimyasalları



 [musteri\\_iliskileri@fixa.com.tr](mailto:musteri_iliskileri@fixa.com.tr)

 [www.fixa.com.tr](http://www.fixa.com.tr)